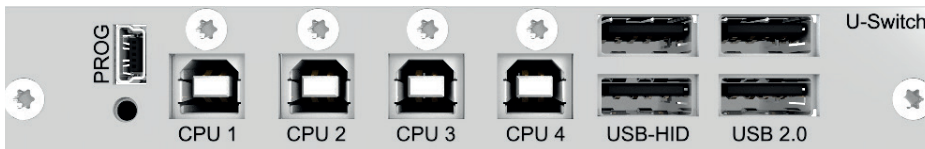


Operating several computers with multiple displays via a single keyboard and mouse



Supports Multi-Screen Control 2.0

Switching via keyboard & mouse

Quick and instant switching

Optional push-buttons via GPIO module

LEDs indicators

## PRODUCT INFORMATION

When it is necessary to operate several computers with multiple displays via a single keyboard and mouse, the Draco U-Switch is the ideal solution. A user-friendly interface makes it quick and easy to manage multiple CPU data from a single workstation.

The Draco U-Switch is perfect for computer workstations normally found in banking, surveillance and command & control environments where multiple displays connected to different CPUs must be managed simultaneously.

By integrating the Draco U-Switch in the

KVM environment users can perform fast and accurate mouse selections across multiple screens without the need to manually change keyboard and mouse connections.

It now becomes a seamless and smooth operation to move a mouse across adjacent screen boundaries. Alternatively, changing the mouse and keyboard to another screen can be achieved using simple hotkey commands.

The Draco U-Switch can be combined with the Draco tera enterprise, flex and

compact matrix switches to enhance the flexibility of multiple CPU management from a single multi-screen workstation.

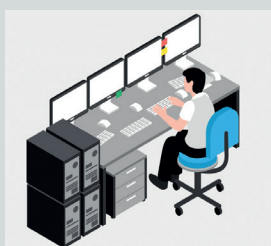
The Draco U-Switch saves valuable workspace, increases productivity, and gives the user realtime switching with seamless mouse movement across multiple displays.

### Security

The Draco U-Switch supports both USB-HID and USB 2.0 transparent peripherals. For USB-HID - only connectivity, the transparent USB 2.0 can be disabled to avoid unwanted data transmission.

## PRODUCT FEATURES

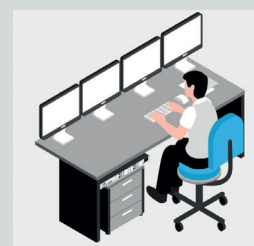
- Instant Switching for fast, delay-free switching
- Switching via keyboard or optional push buttons
- Supports MSC 2.0: Multi-Screen Control (switching via mouse movement)
- Compatible with all Draco products and chassis
- Compatible with all USB-HID devices
- Supports USB-HID (keyboard & mouse)
- USB 2.0 (can be switched off per port)
- Space-saving design
- GPIO functionality as an option



Without Draco U-Switch and extenders

### Draco U-Switch clears up your workspace

- No desktop clutter
- Faster computer access
- Ideal solution for control room workstations
- Integrates Single-Head and Dual-Head sources



With Draco U-Switch and extenders

Operating several computers with multiple displays via a single keyboard and mouse

TECHNICAL DATA	
Input	4x USB Type B
Output	4x USB Type A (2x HID, 2x USB 2.0)
Service	1x Mini USB
Keyboard / mouse	USB-HID
Optional add-on modules	Suitable add-on modules under the following link: <a href="http://www.ihse.com/add-on-modules">www.ihse.com/add-on-modules</a>
Power consumption	1580 mA
Power supply	Power supply via the used Draco vario chassis*
Dimensions	129 x 20 x 142 mm
Weight	Approx. 120 g
Chassis / mounting accessories	Suitable Draco vario chassis and mounting accessories under the following link: <a href="http://www.ihse.com/chassis-accessoires">www.ihse.com/chassis-accessoires</a>
Upgradable	Yes

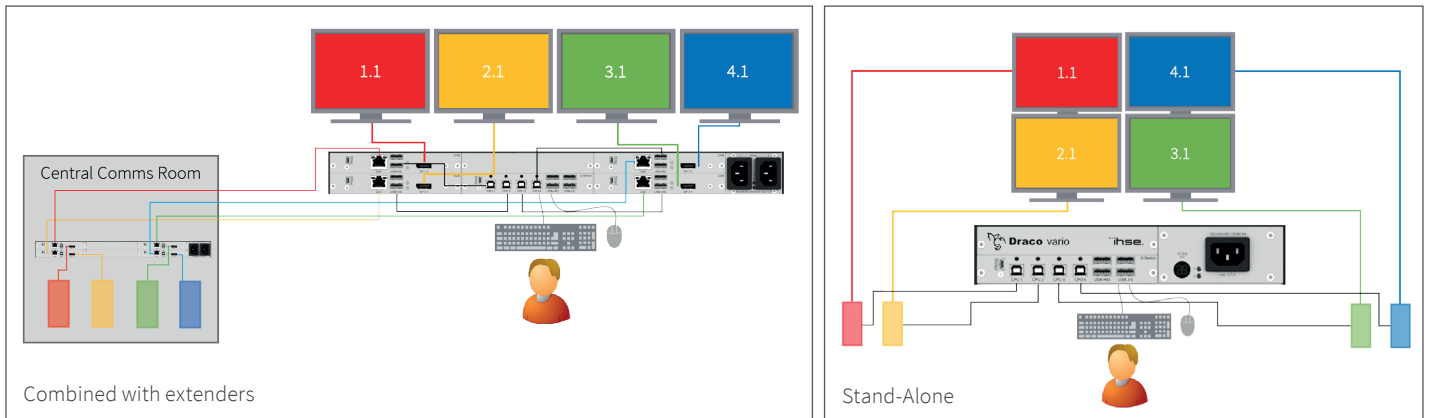
\* For detailed information refer to the user manual.



## FUNCTIONAL DIAGRAM

### U-Switch MSC 2.0 - Next Gen Multi-Screen Control

Mission critical control rooms often are equipped with operator desks having 4 displays in various setups for a single operator and servers locked away in central rooms extended via Draco vario Cat X or Fiber extenders.



## ORDER NUMBERS

DRACO VARIO U-SWITCH MODULE	PART NO.
Draco vario U-Switch Module (for mounting in Draco vario chassis), 4 port USB-Switch (2 USB 2.0 devices supported)	B476-4U4T

## ALTERNATIVE U-SWITCH MODELS

More information about the alternative U-Switches can be found under the following link: [www.ihse.com/wp-content/uploads/files/data-sheets/ds476.pdf](http://www.ihse.com/wp-content/uploads/files/data-sheets/ds476.pdf)

U-SWITCH DESKTOP SOLUTIONS (NON-MODULAR)	PART NO.
Draco U-Switch, 4 port USB-Switch (2 USB-HID devices supported)	K476-4U
Draco U-Switch, 4 port USB-Switch (4 USB-HID devices supported)	K476-4U2
Draco U-Switch, 8 port USB-Switch (2 USB-HID devices supported)	K476-8U
Draco U-Switch, 4 port USB-Switch (2 USB-HID and 2 USB 2.0 devices supported) with USB 2.0 switching on the upper board	K476-4U4T



IHSE offers an online tool for free configuration of your KVM projects. It enables documentation and verification of individual extenders up to complete matrix applications. All KVM switches and extenders are available for selection, including add-on modules, chassis variants and special accessories: [dsd.ihse.com](http://dsd.ihse.com)