



Single head 4K30 or dual head 1920x1200 support

Realtime KVM Access via 1G IP networks to Draco tera matrix systems

Compatible to existing Draco tera installs via Draco tera IP Gateway

Space-saving form factor for dense mounting

Compatible with all Draco vario chassis solutions

Basic requirements to network infrastructure only

## PRODUCT INFORMATION

### Access Flexibility

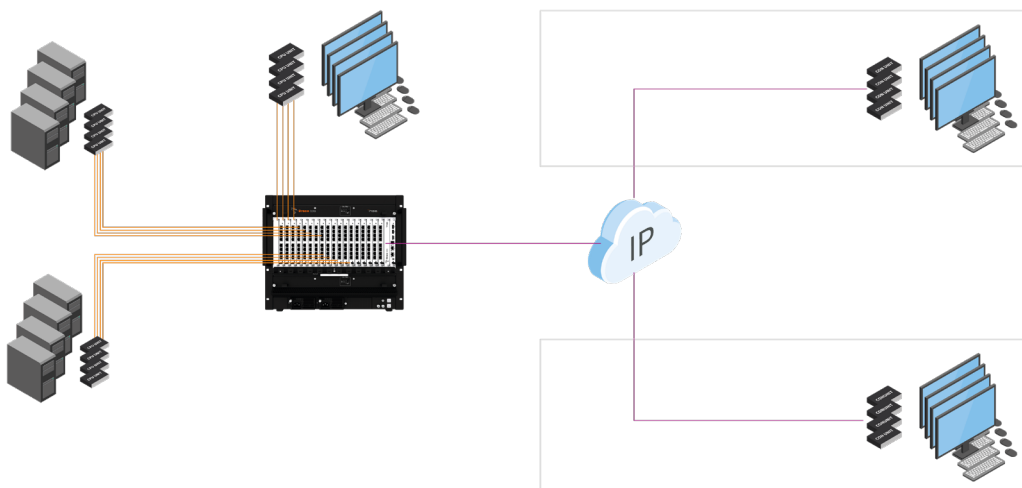
The Draco vario IP Gateway consoles provide seamless integration into Draco tera KVM matrix applications via IP network infrastructure. Instead of using dedicated Cat X or fiber optic links, the new IP based consoles make use of Gigabit Ethernet topologies, allowing for more flexibility accessing via Draco tera KVM matrix switches attached target computers. KVM connections with up to 4K30 resolutions single head or 1920x1200 dual head are supported across 1G IP connections in real-time.

### Network simplicity due to hybrid setup

Since the core KVM matrix system still is based on easy to setup proprietary connectivity, it is way easier to provide individual consoles flexible IP access. Requirements on the network infrastructure are a sufficient bandwidth and low latency for maintaining the highest performance. Complexity such as Multicast, IGMP, Jumbo Frames are not to worry about, thanks to the hybrid KVM architecture.

To integrate a Draco vario IP Gateway into an already operational KVM system, users only need a Draco tera enterprise or Draco tera flex matrix switching system with an IP Gateway interface and 1G/10G network infrastructure. This hybrid KVM setup with its mix of proprietary and IP connected endpoints offers completely new levels of flexibility and connectivity.

## CONSOLE ACCESS VIA IP TO DRACO TERA MATRICES



TECHNICAL DATA					
Output	Primary channel: 1x DisplayPort 1.1 Secondary channel: 1x Mini DisplayPort 1.1				
Audio (embedded)	Integrated 2-channel PCM Stereo Audio				
Service Interface	Mini-USB				
Maximum Resolution	<table border="1"> <tr> <th>Single Head operation (primary channel)</th> <th>Dual Head operation (primary and secondary channel)</th> </tr> <tr> <td>1920 x 1080 @ 120 Hz (reduced blanking) 1920 x 1080 @ 120 Hz (normal blanking) 2560 x 1440 @ 60 Hz (normal blanking) 3840 x 2160 @ 30 Hz (reduced blanking) 4096 x 2160 @ 30 Hz (reduced blanking)</td> <td>1920 x 1200 @ 60 Hz (reduced blanking) 1920 x 1200 @ 60 Hz (reduced blanking)</td> </tr> </table>	Single Head operation (primary channel)	Dual Head operation (primary and secondary channel)	1920 x 1080 @ 120 Hz (reduced blanking) 1920 x 1080 @ 120 Hz (normal blanking) 2560 x 1440 @ 60 Hz (normal blanking) 3840 x 2160 @ 30 Hz (reduced blanking) 4096 x 2160 @ 30 Hz (reduced blanking)	1920 x 1200 @ 60 Hz (reduced blanking) 1920 x 1200 @ 60 Hz (reduced blanking)
Single Head operation (primary channel)	Dual Head operation (primary and secondary channel)				
1920 x 1080 @ 120 Hz (reduced blanking) 1920 x 1080 @ 120 Hz (normal blanking) 2560 x 1440 @ 60 Hz (normal blanking) 3840 x 2160 @ 30 Hz (reduced blanking) 4096 x 2160 @ 30 Hz (reduced blanking)	1920 x 1200 @ 60 Hz (reduced blanking) 1920 x 1200 @ 60 Hz (reduced blanking)				
Keyboard / Mouse	USB-HID				
Interfaces with optional add-on modules					
Maximum transmission range to network switch:	Cat X 100m Single Mode Fiber 10km				
Power Supply	Power supply via the used Draco vario chassis*				
Current Draw	Max. 1.600 mA per extender module (power input via the used Draco vario chassis)*				
Dimensions	20 x 129 x 143 mm				
Weight	100g				
Chassis / Mounting Accessoires	Suitable Draco vario chassis and mounting accessories under the following link: <a href="https://www.ihse.com/chassis-accessoires/">https://www.ihse.com/chassis-accessoires/</a>				
Upgradable	Onboard flash				

\* For detailed information refer to the user manual.

## ORDER NUMBERS

DRACO VARIO IP GATEWAY CON SERIES 483		PART NO.
Draco vario IP Gateway CON module DP1.1, DH, 4K30 o. 2x1080p, USB HID, Cat X 1G		IP-R483-B2HC
Draco vario IP Gateway CON module DP1.1, DH, 4K30 o. 2x1080p, USB HID, Fiber LC SM 1G		IP-R483-B2HS
Draco vario CON module DP1.1, DH, 4K30 o. 2x1080p, USB HID, Cat X 1G, red.		IP-R483-B2HCR
Draco vario CON module DP1.1, DH, 4K30 o. 2x1080p, USB HID, Fiber LC SM 1G, red.		IP-R483-B2HSR



IHSE offers an online tool for free configuration of your KVM projects. It enables documentation and verification of individual extenders up to complete matrix applications. All KVM switches and extenders are available for selection, including add-on modules, chassis variants and special accessories: [dsd.ihse.com](https://www.dsd.ihse.com)