

MODULAR AND FLEXIBLE DRACO KVM SOLUTIONS

ihse.

DRACO TERA  
IP GATEWAY

NETWORK CONNECTION OF  
DRACO TERA KVM SYSTEMS  
VIA IP PROTOCOL

IHSE IP GATEWAY - SECURE AND HIGH-PERFORMANCE CONNECTIONS

**INTEGRATION OF KVM MATRICES OVER IP NETWORKS**

The **Draco tera IP Gateway** provides IHSE KVM users with the ability to bridge multiple KVM matrices over existing IP networks within buildings, across campuses and between remote corporate offices.

It combines the high levels of security and performance of the Draco tera KVM system with the flexibility and ease of connectivity inherent in IP-based network communication. It allows users to access remote computers and interact in real-time with minimal latency and no visible artefacts, with the full confidence of a highly secure KVM system.

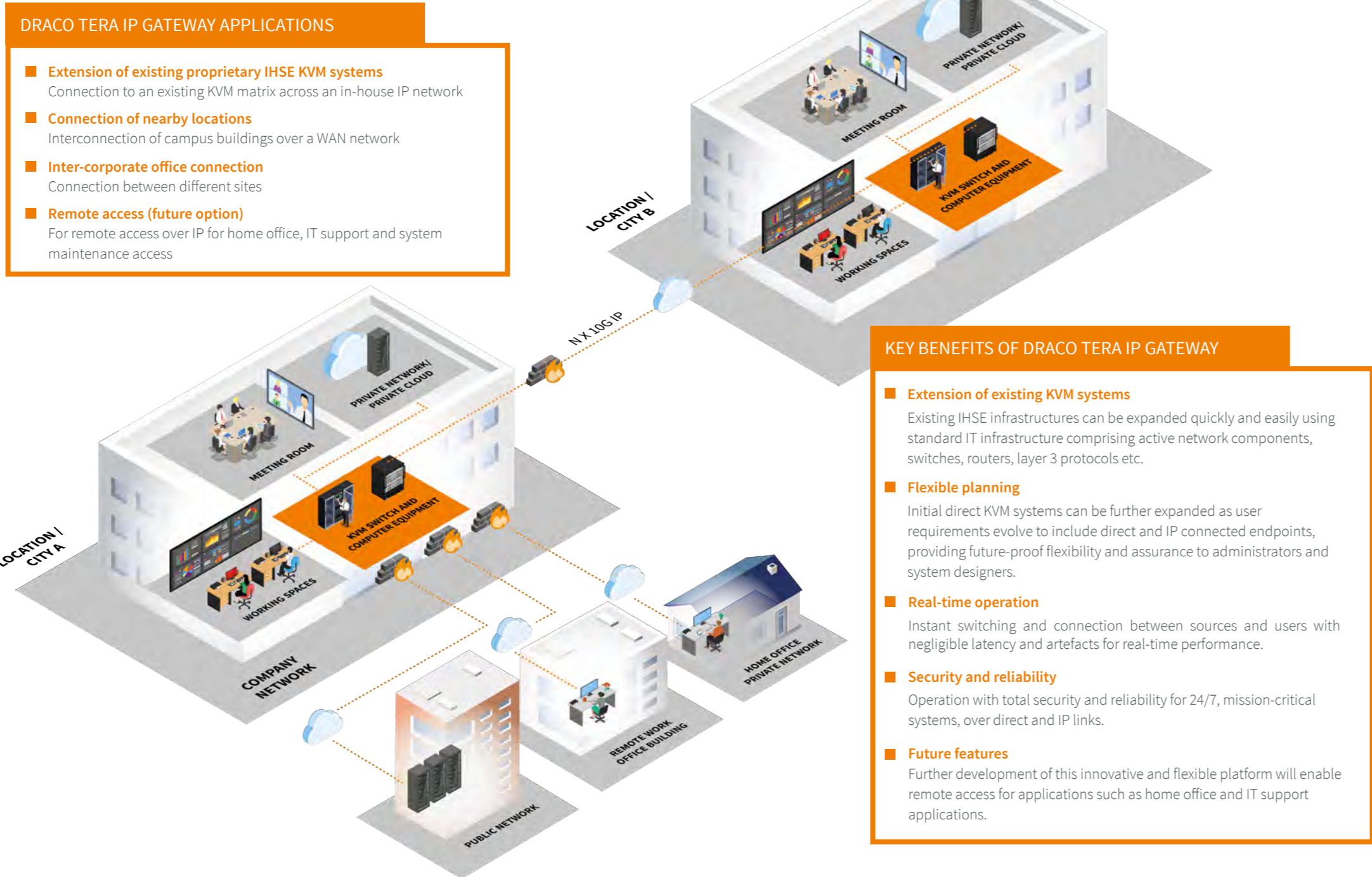


Resources can be shared between users across greater distances using available network topologies: LANs, WANs, whilst fully maintaining the significant advantages of direct KVM matrix networks including connection flexibility and simplicity, administrative oversight and switching speed.

The **Draco tera IP Gateway** enhances corporate efficiency and provides new, highly-dependable ways to implement standby and back-up facilities to accommodate essential business continuation strategies. Future applications such as home-office and remote IT support are also planned.

**THE BEST OF BOTH WORLDS**

The **Draco tera IP Gateway** combines the best of both worlds. Allowing secure, IP-routable site networking of direct KVM matrix systems without compromising operational flexibility, security or maintainability.



- DRACO TERA IP GATEWAY APPLICATIONS**
- **Extension of existing proprietary IHSE KVM systems**  
Connection to an existing KVM matrix across an in-house IP network
  - **Connection of nearby locations**  
Interconnection of campus buildings over a WAN network
  - **Inter-corporate office connection**  
Connection between different sites
  - **Remote access (future option)**  
For remote access over IP for home office, IT support and system maintenance access

- KEY BENEFITS OF DRACO TERA IP GATEWAY**
- **Extension of existing KVM systems**  
Existing IHSE infrastructures can be expanded quickly and easily using standard IT infrastructure comprising active network components, switches, routers, layer 3 protocols etc.
  - **Flexible planning**  
Initial direct KVM systems can be further expanded as user requirements evolve to include direct and IP connected endpoints, providing future-proof flexibility and assurance to administrators and system designers.
  - **Real-time operation**  
Instant switching and connection between sources and users with negligible latency and artefacts for real-time performance.
  - **Security and reliability**  
Operation with total security and reliability for 24/7, mission-critical systems, over direct and IP links.
  - **Future features**  
Further development of this innovative and flexible platform will enable remote access for applications such as home office and IT support applications.



The **Draco tera** switch range extends from 8 to 576 non-blocking assignable ports. With mixed operation over copper and fiber cables, tera switches handle all types of digital video together with digital audio and USB connectivity. The **Draco tera** KVM switch delivers visually lossless transmission, instant connectivity and extensive configuration and redundancy options.



The modular **Draco tera flex** matrix switch delivers an even higher level of performance, with enhanced flexibility, modularity, scalability and functionality.



A modular KVM switch that delivers the ultimate in flexibility, back-up and redundant component options, scalability and future proofing. Ideal for mission-critical installations in which system down-time is unacceptable and failure is not an option.

**SECURITY AND RELIABILITY**

In addition to the high level of data security of data transmitted throughout IHSE's KVM switching and extension systems, Secure Core™ technology prevents direct access to the matrix from the IP network. This maintains the integrity of the KVM system and is consistent with the IHSE philosophy of secure separation of core matrix and IP networks as an effective countermeasure to potential cyber attacks.



**APPLICATION SETUP**

With the **Draco tera IP Gateway**, separate **Draco tera** matrix installations can be easily interconnected to form a single homogeneous system deployed over standard IP network switches. Up to eight bidirectional IP network connections can be deployed per **Draco IP Gateway** allowing bidirectional KVM operation with video resolutions of up to 4K30\* to other matrices.

**Draco tera IP Gateway** operates in parallel with the existing Matrix Grid. Matrix Grid utilises copper or fiber cabling to provide direct connection between multiple Draco tera switches, in situations in which suitable direct cabling can be provided and is preferred.

Direct point-to-point connections may be configured between a **Draco tera** matrix and up to eight receiver CON units via IP network connections (future option).

\* In combination with corresponding Draco vario extenders

# APPLICATION SCENARIOS FOR IP GATEWAY

## INTRA-BUILDING CONNECTIVITY

**Draco tera IP Gateway** enables KVM connectivity within buildings across an existing IP network infrastructure. Floor-to-floor KVM matrix connections can be established with a minimum of cabling.



## CAMPUS NETWORKS

With **Draco tera IP Gateway**, KVM systems in separate buildings within a campus site are easily and effectively interconnected. E.g. industrial parks, airports, universities, development facilities, etc. Users cross building thresholds and access computers on remote KVM networks.



## INTRA-CITY NETWORKS

For greater distance connectivity, **Draco tera IP Gateway** can link KVM systems over Wide Area Networks (WAN). Users are no longer restricted to their local KVM networks but enjoy greater access to corporate resources.



## INTER-CITY NETWORKS

**Draco tera IP Gateway** operates over IP networks interconnecting cities with total security. It is possible to bridge KVM matrix systems in widespread office locations with real-time operation, making it ideal for fallback and standby operations.



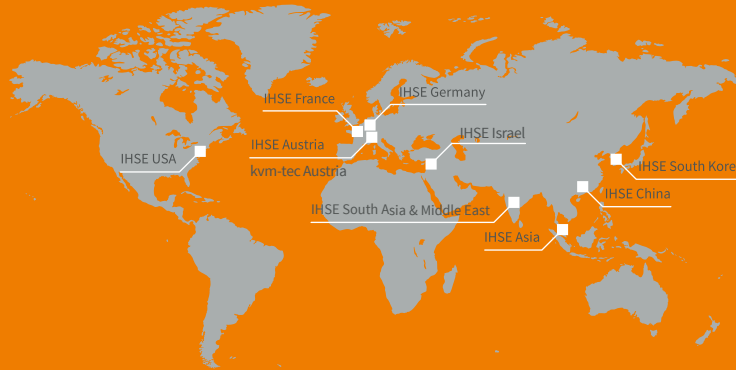
# CONTACT IHSE



## IHSE GmbH - Headquarters

Benzstr. 1  
88094 Oberteuringen  
Germany

Tel: +49 (7546) 9248-0  
info@ihse.de  
www.ihse.com



## Regional Offices

The Lab Paris, France  
Tel: +33 (678) 478 822  
info@ihse.com

Shoham, Israel  
Tel: +972 (544) 320 768  
info@ihse.com

Zwettl, Austria  
Tel: +49 (173) 590 711 9  
info@ihse.com

**IHSE USA LLC**  
1 Corporate Drive  
Cranbury, NJ 08512  
USA

Tel: +1 (732) 738 878 0  
info@ihseusa.com

**IHSE GmbH Asia Pacific Pte Ltd**  
158 Kallang Way, #07-13A  
Singapore 349245

Tel: +65 (6841) 470 7  
info-apac@ihse.com

**IHSE China Co., Ltd.**  
Room 814, Building 3, Kezhu Road  
No. 233 Huangpu District  
Guangzhou PRC

Tel: +86 (189) 888 381 11  
info@ihse.com.cn

**kvm-tec GmbH - Headquarters**  
Gewerbepark Mitterfeld 1A  
2523 Tattendorf  
Austria

Tel.: +43 (2253) 81 912  
sales@kvm-tec.com  
www.kvm-tec.com

**Seoul, South Korea**  
Tel: +82 (103) 752 401 3  
info@ihse.com

**South Asia & Middle East**  
Tel: +91 (982) 113 918 6  
info@ihse.com



SECURE KVM SOLUTIONS ■ IP ACCESS ■ MISSION CRITICAL 24/7