

## Scene Double provides remote computer control at Barcelona's El Prat airport



The Centro Gestión Aeroporturia (Airport Management Centre) at Barcelona airport handles all ground services for aircraft and passenger movements. It is responsible for a diverse range of activities: from airport parking and refuelling, passenger information and announcements, baggage handling to environmental controls. Activities that are essential to support over 30 million passengers and in excess of 400,000 aircraft movements each year. Not surprisingly this wide range of services requires a host of different computer systems and an army of operators to maintain smooth and efficient operation of a continuously operating and immensely busy airport. A total of 43 operators are required to control this wide diversity of services, situated in a large control room adjacent to one of the main terminal buildings. Each operator is located at a purpose-built workstation and supported by a bank of five computer screens connected to individual computers housed over 50 metres away in a remote data centre.

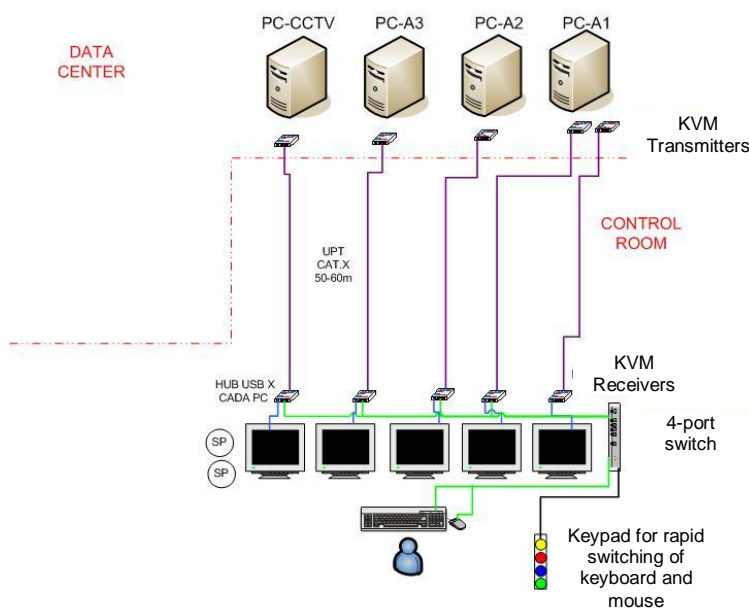


The layout for the entire operation was designed to ensure the best possible physical environments for both operators and equipment explains Rafael Serrano, Project Director for Gesab, the system integrator for the installation: “In such a critical situation it is important to ensure that both operators and computing equipment are located in their ideal environments, which are completely different for each. For the operators we have created a comfortable and ergonomically designed workplace that is free from unnecessary noise and clutter. The computers are located within a high-security centre, in air-conditioned equipment bays at a lower temperature providing the ideal ambient environment with good access for servicing without affecting the operators. Each operator has five screens directly connected to four computers and a single keyboard and mouse that they can switch to any of the computers to interact with it. We also considered the use of matrix switching and IP addressing of computers with the airport operator but chose direct connectivity and dedicated workstations to ensure utmost security and continuous operation. Other methods could have presented a single point of failure that may have affected the whole system. This architecture means that we have a much greater level of integrity.”

The control room and data centre are separated by a distance of over 50 metres, well beyond the range of normal video and USB wiring, which inevitably meant the need for KVM extenders to provide connectivity for the operators’ keyboards, video screens and mice necessary to access and control the computers. Rafael Serrano chose Scene Double’s SDBX Dual Channel KVM extenders for this purpose, for reasons he explains: “We evaluated several suppliers’ products for suitability and found that Scene Double’s KVM extenders best met the overall criteria for use in such an area of critical operation. In particular, we have confidence in their quality and reliability and that they will not fail, even after years of continuous use. Their design gave everything we required in terms of instant response, ease of connectivity and ability to support audio, USB2.0 and hot swapability. Some of the computers operate in dual-head mode and we have allowed for future expansion by using the same type of dual channel extenders throughout. Scene Double helped us select and integrate KVM equipment from various manufacturers to ensure reliable operation; invaluable assistance that ensured the project was delivered on-time”



The SDBX KVM Extender kit comprises a pair of local and remote units that allow interconnection of a dedicated PC to a remote set of keyboard, video and mouse devices up to 300 metres away at full 1600 x 1200 pixel resolution over a single CATx cable. They are ideally suited to single and dual head operation and support bi-directional stereo audio. For ease of installation, the local unit offers local video outputs whilst the remote unit provides four-port USB expansion and a serial port interface for peripheral devices. Fully integrated skew compensation ensures optimum video quality is maintained over the full operating distance. Ray Gordon, Managing Director of Scene Double provided technical support on the application: "We embarked on a lengthy testing period with Gesab in order to prove that the SDBX KVM extender was fully up to the purpose and am pleased to say that it met the criteria fully and passed all tests with flying colours. After several months continuous use these devices have shown themselves to be well suited to the application and we look forward to working with Gesab on future projects."



## About Scene Double

Scene Double's design and manufacturing experience and expertise in the professional KVM and video extension market stretches back over 19 years from its formation in 1991. Many products are manufactured under OEM relationships with some of the computer industry's largest suppliers of computer systems and peripherals from Scene Double's own UK-based state-of-the-art manufacturing facility capable of volume surface-mount and complete product assembly. Direct sales of KVM, DVI and video extension and switching devices is also undertaken from the headquarters site in Hertfordshire to major organisations throughout the world where they are renowned for their quality, innovation and reliability.

Scene Double has entered into a number of technology cross-licensing and marketing deals with other companies in similar markets. The company prides itself on a strong level of personal support, provided in most case by engineers responsible for original product design. This has culminated in the recent opening of a fully equipped and spacious training facility for all its own products, together with those of its partner companies. Scene Double also offers full system specification services to assist dealers and system integrators in specifying and using its KVM and DVI switching and extension product range.

## High resolution Photos

Product images are available at [www.scene-double.co.uk/press](http://www.scene-double.co.uk/press)

## Further Information

<b>Press information:</b> Steve Montgomery New Media Image Tel: +44 (0)2392 451006 Email: <a href="mailto:steve@newmediaimage.co.uk">steve@newmediaimage.co.uk</a>	<b>Distributor information:</b> Scene Double Ltd Tel: +44 (0) 208 099 3089 Email: <a href="mailto:press@scene-double.co.uk">press@scene-double.co.uk</a>
--	---